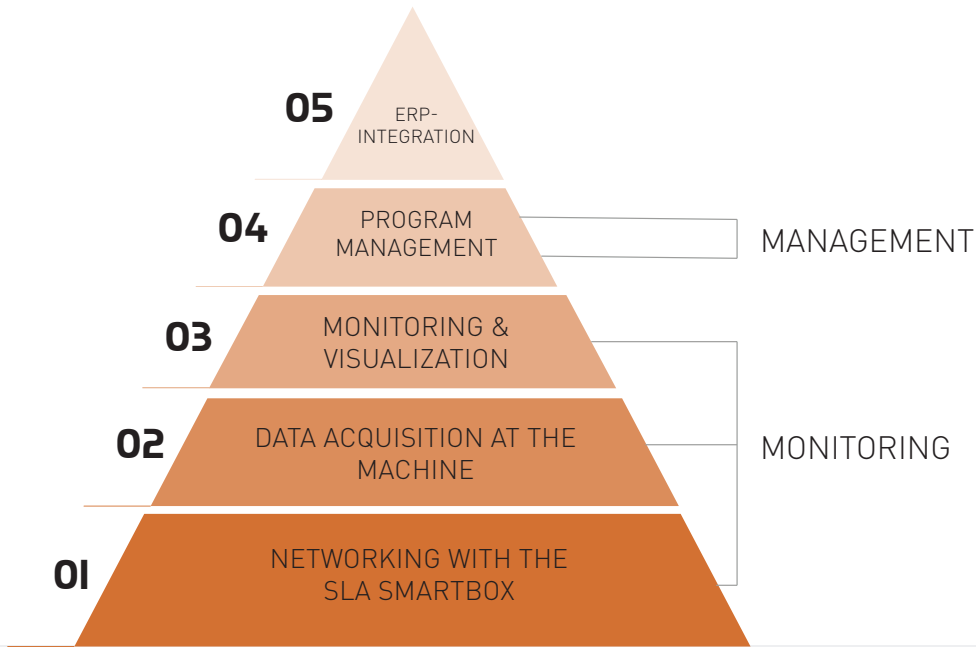




DEVICE CONNECT powered by SLA

SMART PRODUCTION MACHINES
WITH INTELLIGENT SOFTWARE TO MORE
TRANSPARENCY AND EFFICIENCY.



**SMART,
MODULAR
STRUCTURE!**

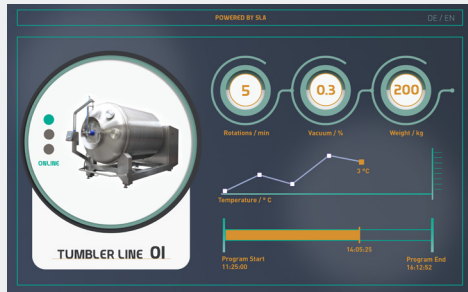
01 NETWORKING WITH THE SLA SMARTBOX

In order to be able to control and monitor the machines optimally, they are fully integrated into the existing machine and IT infrastructure and networked with all important system components (temperature sensor, scales, etc.). This task is performed by the SLA SmartBox, which ensures the networkability of the machines.



02 DATA ACQUISITION AT THE MACHINE

On the basis of the network capability, all production and machine data can be recorded in real time during machine operation and visualized on all end devices. This means that you always know what is happening in which production machine.



03 MONITORING & VISUALIZATION

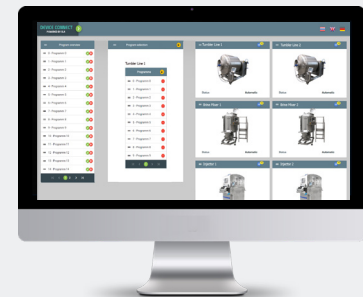
Freely configurable parameters (e.g. weight, rotations, temperature) are monitored and visualized on the machine. The data of the machine runs are stored to trace completed machine runs and production orders.

04 PROGRAM MANAGEMENT

A central program management ensures simple and flexible adjustment and optimization of program runs (possible on several machines simultaneously and across different locations). An access protection function is provided in case of program changes.

05 ERP-INTEGRATION

In addition, integration into the IT infrastructure for direct communication with ERP or warehouse management is possible. Production orders can be called up for automatic, recipe-based material flow control. The collected production and machine data are reported back to the system, including batch allocation.



HENNEKEN TUMBLER

As a family-run company, Henneken has been producing machines for the meat processing industry for over 40 years. During the development process, the company places great emphasis on the cooperation of technologists and technicians for products of the highest quality.

FERDINAND HENNEKEN GMBH

Hedderhagen 10, 33181 Bad Wünnenberg

Phone: +49 2953 8553

E-Mail: info@henneken-tumbler.de

Website: www.henneken-tumbler.de



SLA SOFTWARE LOGISTIK ARTLAND GMBH

For over 25 years SLA has been developing IT solutions for food production, logistics and catering. With an understanding for the technology, but also for the people it is made for. With solutions that are as diverse as the customers' requirements.

SLA SOFTWARE LOGISTIK ARTLAND GMBH

Friedrichstraße 30, 49610 Quakenbrück

Phone: +49 5431 9480-0

E-Mail: info@sla.de

Website: www.sla.de