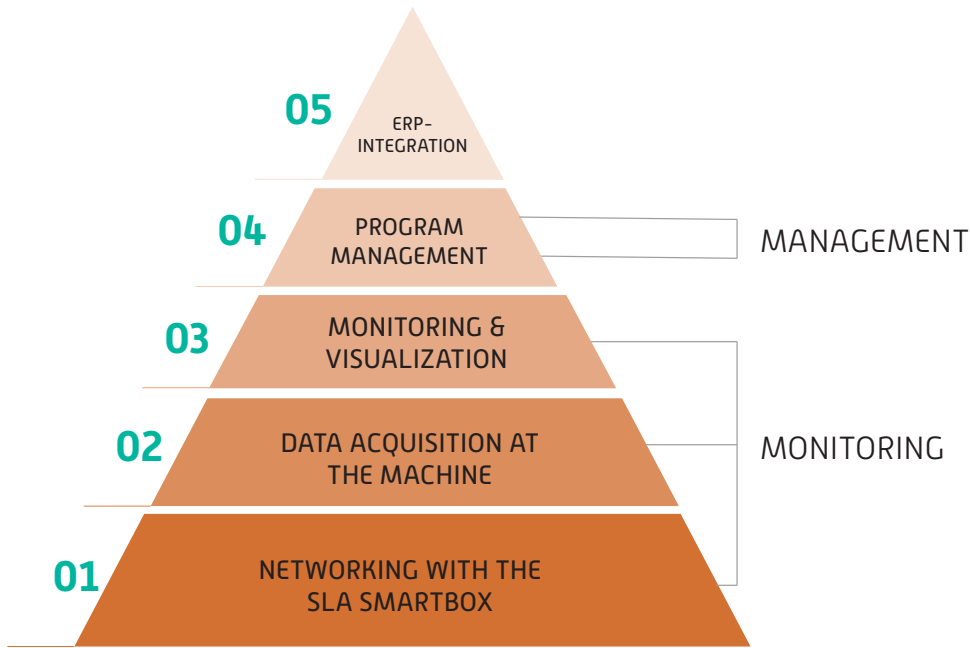


# SLA DEVICE CONNECT

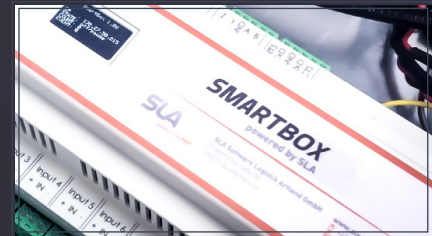
WITH INTELLIGENT SOFTWARE TO **SMART PRODUCTION MACHINES**, MORE TRANSPARENCY AND MORE EFFICIENCY.



**SMART &  
MODULAR  
STRUCTURE!**

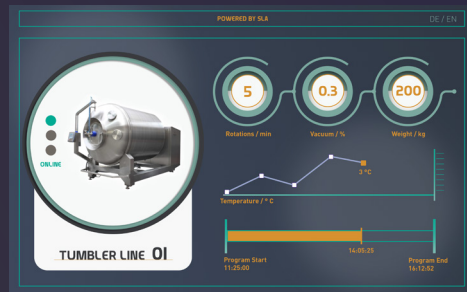
## 01 NETWORKING WITH THE SLA SMARTBOX

In order to be able to control and monitor the machines optimally, they are fully integrated into the existing machine and IT infrastructure and networked with all important system components [temperature sensor, scales, etc.]. This task is performed by the SLA Smart-Box, which ensures the networkability of the machines.



## 02 DATA ACQUISITION AT THE MACHINE

On the basis of the network capability, all production and machine data can be recorded in real time during machine operation and visualized on all end devices. This means that you always know what is happening in which production machine.



## 05 ERP-INTEGRATION

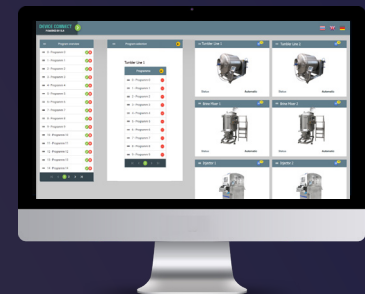
In addition, integration into the IT infrastructure for direct communication with ERP or warehouse management is possible. Production orders can be called up for automatic, recipe-based material flow control. The collected production and machine data are reported back to the system, including batch allocation.

## 03 MONITORING & VISUALIZATION

Freely configurable parameters (e.g. weight, rotations, temperature) are monitored and visualized on the machine. The data of the machine runs are stored to trace completed machine runs and production orders.

## 04 PROGRAM MANAGEMENT

A central program management ensures simple and flexible adjustment and optimization of program runs (possible on several machines simultaneously and across different locations). An access protection function is provided in case of program changes.





## SLA Software Logistik Artland GmbH

As an expert in digitalization, SLA accompanies its customers from the food industry and gastronomy into a digital future. With innovative IT solutions and services, precisely tailored to the individual needs of their customers, they optimize all processes in production and logistics and make them more efficient. Where other systems have their limits, SLA comes into play and enables high-quality digitalization, networking and automation.

Friedrichstraße 30 | 49610 Quakenbrück, Germany | +49 [0] 5431 9480-0 | [info@sla.de](mailto:info@sla.de) | [www.sla.de](http://www.sla.de)